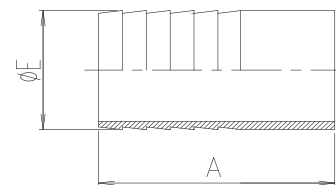


**OLIVA PARA MANGUERA Para Soldar Caño O.D.**

**OLIVE FOR FLEXIBLE HOSE O.D. Welding Ends**

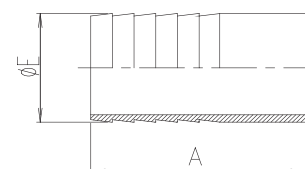
DN	Art. N°	A	B	C	D	E	Peso Weight (kg)
1/2"	150 000 0		50				12,7
3/4"			50				19,05
1"			60				25,4
1 ¼ "			70				31,7
1 ½ "			70				38,1
2"			70				50,8
2 ½ "			80				63,5
3"			80				76,2
4"			100				101,6



**OLIVA PARA INDUSTRIA VITIVINICOLA Para Soldar**

**OLIVE FOR WINE INDUSTRY Welding Ends**

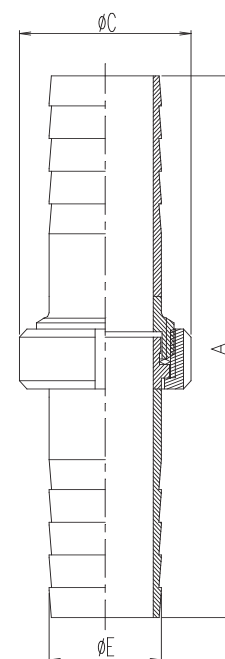
DN	Art. N°	A	B	C	D	E	Peso Weight (kg)
44,5	148 000 0		85				44,5
68			90				68



**OLIVA COMPLETA PARA INDUSTRIA VITIVINICOLA**

**OLIVE UNION FOR WINE INDUSTRY**

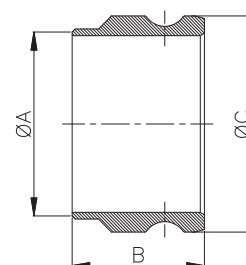
DN	Art. N°	A	B	C	D	E	Peso Weight (kg)
44,5	149 000 0		208		68		44,5
68			230		76		68



**ACOPLE RÁPIDO PARA MANGUERAS**

**QUICK HOSE COUPLING**

DN	Art. N°	A	B	C	D	E	Peso Weight (kg)
2"	146 000 0		50,8	59		63	
2 1/2"			63,5	60		75,8	
3"			76,2	75		91,2	
4"			101,6	75,3		119,4	

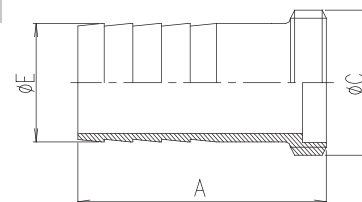


**OLIVA PARA INDUSTRIA VITIVINICOLA Con Manguito Roscado - Norma FAFEUR**

**OLIVE FOR WINE INDUSTRY With Male Part - FAFEUR**

**Mod. 510000**

DN	Art. N°	A	B	C	D	E	Peso Weight (kg)
44,5	148 200 0		107,5		54,5		44,5
68			120		80		68

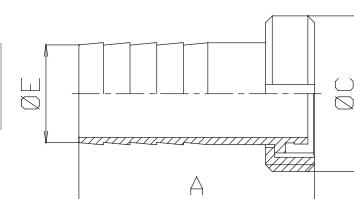


**OLIVA PARA INDUSTRIA VITIVINICOLA Con Manguito Liso y Tuerca - Norma FAFEUR**

**OLIVE FOR WINE INDUSTRY With Liner and Nut - FAFEUR**

**Mod. 520000**

DN	Art. N°	A	B	C	D	E	Peso Weight (kg)
44,5	148 200 0		109,5		68		44,5
68			132,5		92		68



**OLIVA PARA MANGUERA DE GRAN ESPESOR Zunchado**

**OLIVE FOR THICK WALL'S HOSE Strapping**

DN	Art. N°	A	B	C	D	E	Peso Weight (kg)
50	238 A 0000		92	45		50	53
80			127	74		80	83

